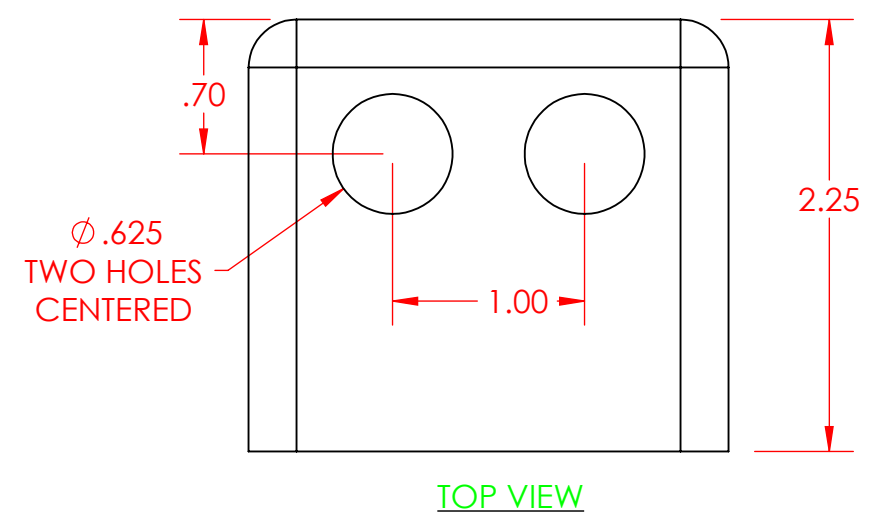


4

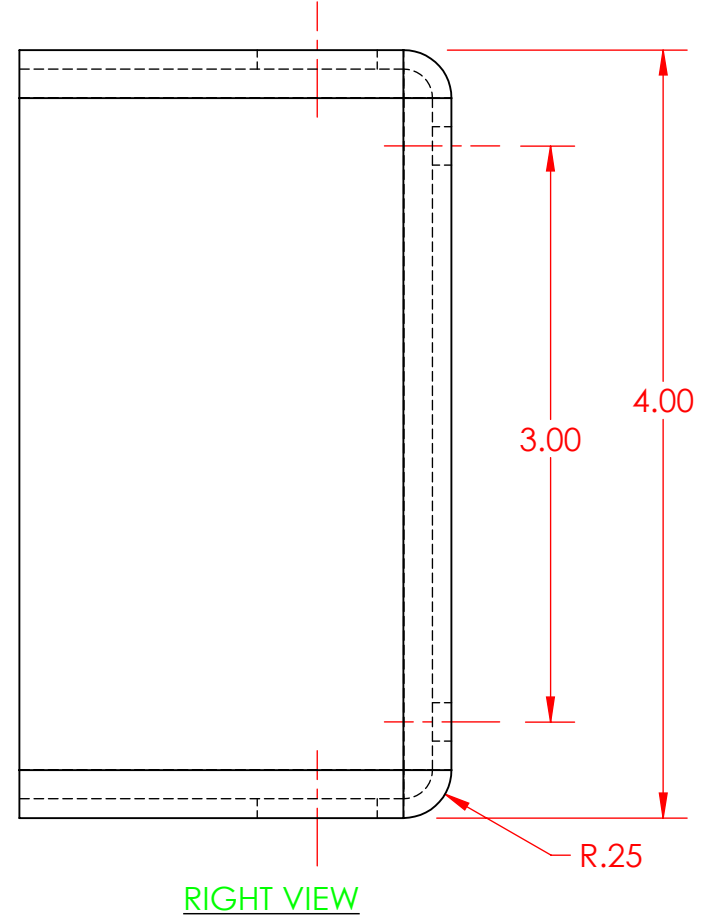
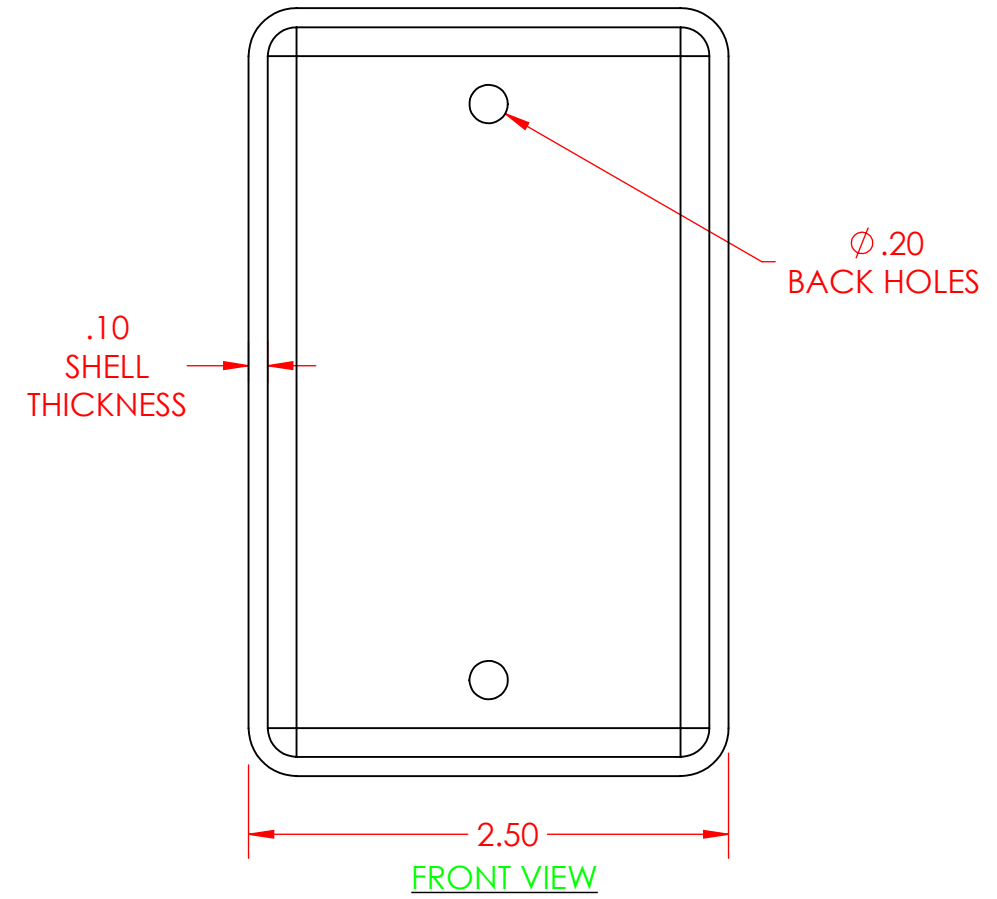
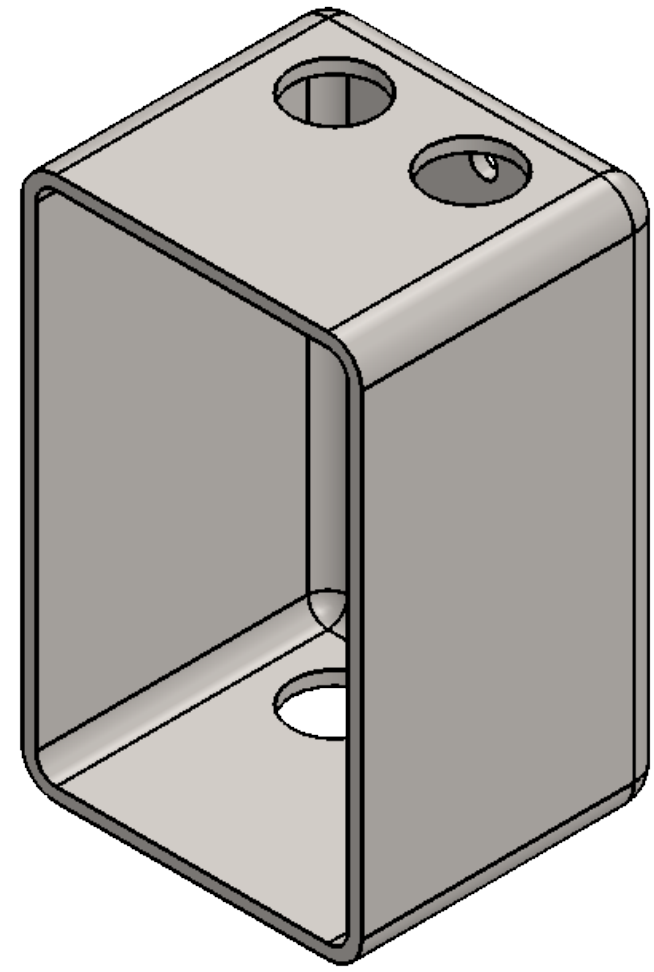
3

2

1



- SHEET NOTES: SUGGESTED FEATURE ORDER AND MASS PROPERTIES - MATERIAL PLAIN: CARBON STEEL**
1. BASE FEATURE EXTRUDE MID PLANE
 1. MASS = 6.3403 POUNDS
 2. CENTER OF MASS: X = 0.0000, Y = 0.0000, Z = 0.0000
 2. SIDE FILLET
 1. MASS = 6.2601 POUNDS
 2. CENTER OF MASS: X = 0.0000, Y = 0.0000, Z = 0.0079
 3. FRONT SHELL
 1. MASS = 0.9926 POUNDS
 2. CENTER OF MASS: X = 0.0000, Y = 0.0000, Z = -0.2324
 4. BACK HOLES
 1. MASS = 0.9909 POUNDS
 2. CENTER OF MASS: X = 0.0000, Y = 0.0000, Z = -0.2309
 5. TOP HOLES
 1. MASS = 0.9563 POUNDS
 2. CENTER OF MASS: X = 0.0000, Y = 0.0000, Z = -0.2238



PROPRIETARY AND CONFIDENTIAL

THE INFORMATION CONTAINED IN THIS DRAWING AND ANY RELATED MATERIAL IS THE SOLE PROPERTY OF ENTERPRISE DESIGN AND INNOVATIONS. ANY SHARING OF THIS INFORMATION, IN WHOLE OR ANY PART THEREOF IS PROHIBITED WITHOUT EXPRESS WRITTEN CONSENT OF ENTERPRISE DESIGN AND INNOVATIONS.



THE JUNCTION BOX ENCLOSURES ELECTRICAL ITEMS				REVISIONS DATE:	ITEM:	NAME	DATE	UNITS IN INCHES TOLERANCES ARE 0.010 INCHES UNLESS OTHERWISE NOTED
						DRAWN	CSS	
		CHECKED	000	000				
		APPV.	000	000				
		MATERIAL		Plain Carbon Steel				
SHEET 1	SHEET SCALE 1:2	SHEET SIZE B	REV	VERSION DATE	1/4/2018			
				SHEET FILE NAME: 01-Junction-Box-2				

4

3

2

1

B

B

A

A