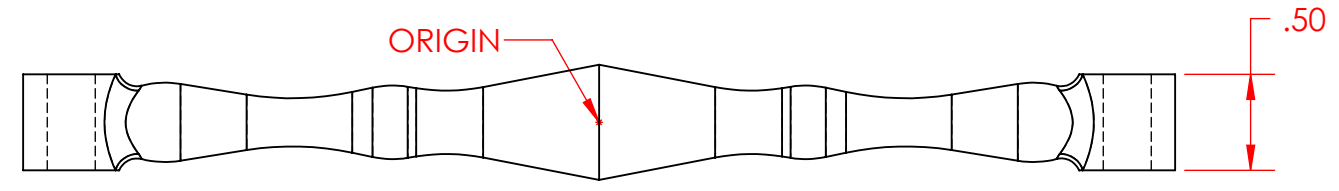


4

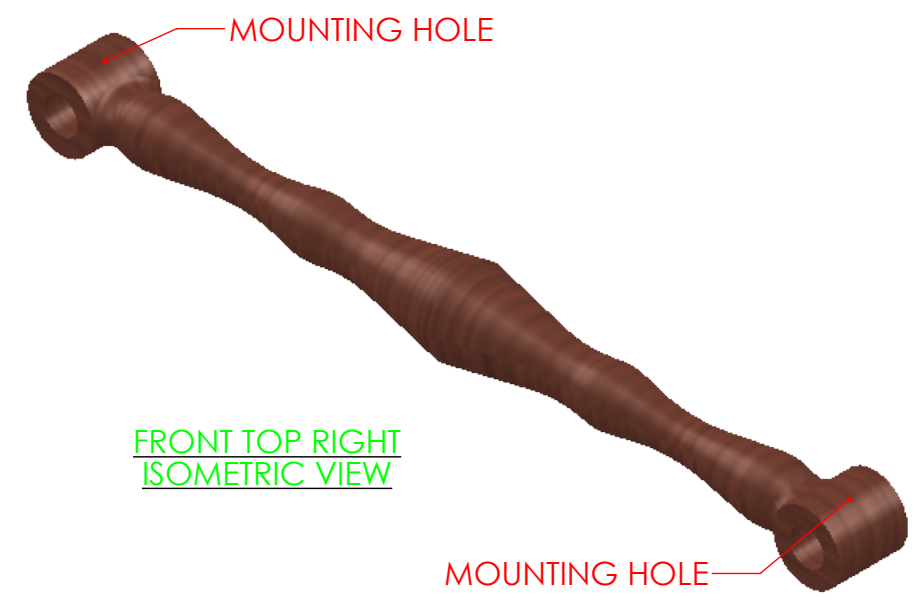
3

2

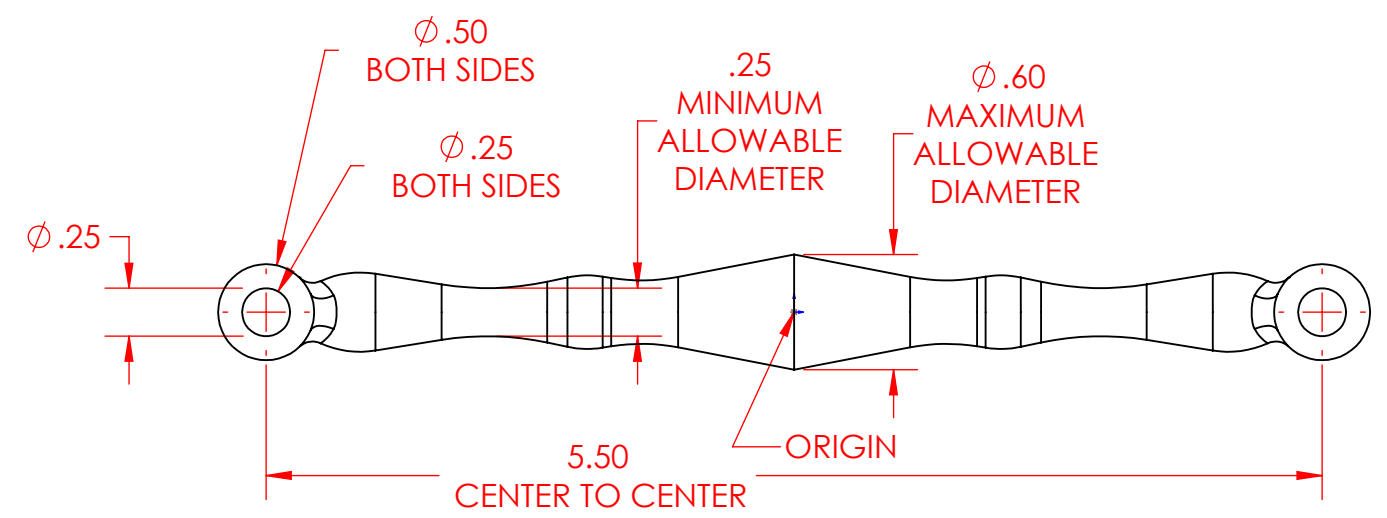
1



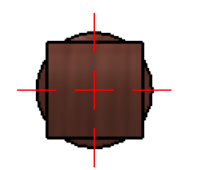
TOP VIEW



FRONT TOP RIGHT ISOMETRIC VIEW



FRONT VIEW



RIGHT VIEW

SHEET NOTES:

1. LOTS OF SYMMETRY, TAKE ADVANTAGE OF IT
2. MATERIAL OF YOUR CHOICE
3. MOUNTING HOLES ON THE FRONT PLANE, SEE DIMENSIONS IN DRAWING VIEW, MID PLANE EXTRUSION, MIRROR FEATURE
4. SOLID REVOLVED BOSS/BASE FEATURE WITH FULLY DEFINED SKETCHES. DESIGN OF YOUR CHOICE, SKETCH MUST CONTAIN: MODEL LINES, MODEL ARCS OR A MODEL STYLE SPLINE - DIMENSIONS TO THE HORIZONTAL OR VERTICAL CENTER LINES, ANGLE DIMENSIONS TO THE HORIZONTAL CENTERLINE, SYMMETRY BETWEEN THE RIGHT AND LEFT SIDES. INCORPORATE THE MINIMUM AND MAXIMUM ALLOWABLE DIAMETERS.

PROPRIETARY AND CONFIDENTIAL

THE INFORMATION CONTAINED IN THIS DRAWING AND ANY RELATED MATERIAL IS THE SOLE PROPERTY OF ENTERPRISE DESIGN AND INNOVATIONS. ANY SHARING OF THIS INFORMATION, IN WHOLE OR ANY PART THEREOF IS PROHIBITED WITHOUT EXPRESS WRITTEN CONSENT OF ENTERPRISE DESIGN AND INNOVATIONS.

SARRUS PUSH ROD				REVISIONS DATE:	ITEM:	NAME	DATE	UNITS IN INCHES
						DRAWN	CSS	
SARRUS MECHANISM						CHECKED	000	TOLERANCES ARE 0.010
						APPV.	000	000
VARIOUS VIEWS						MATERIAL	Beryllium Copper, UNS C17200	
						VERSION DATE	1/25/2018	
SHEET 1	SHEET SCALE 1:1	SHEET SIZE B	REV			SHEET FILE NAME: 03-Sarrus-Push-Rod		



4

3

2

1

B

B

A

A