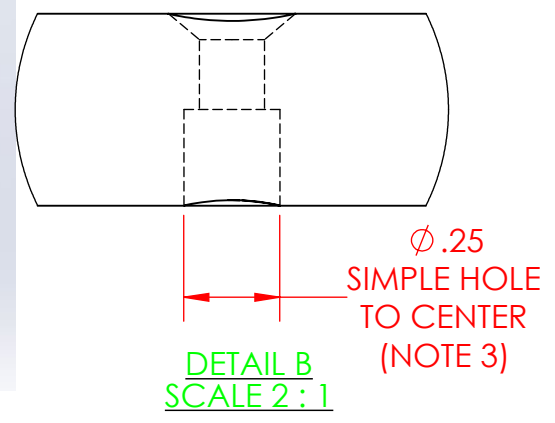
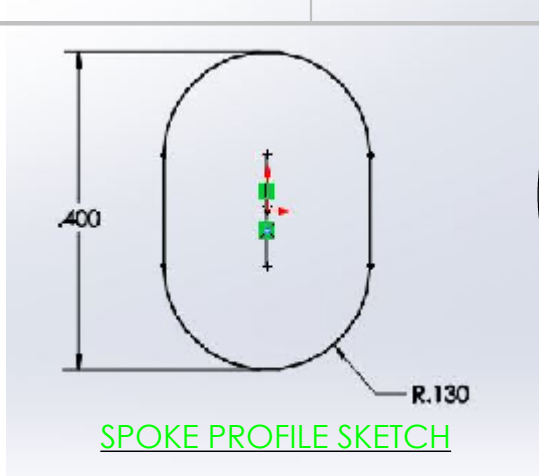
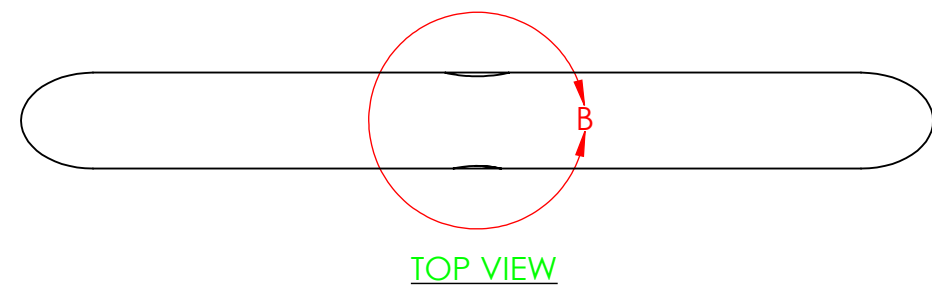


4

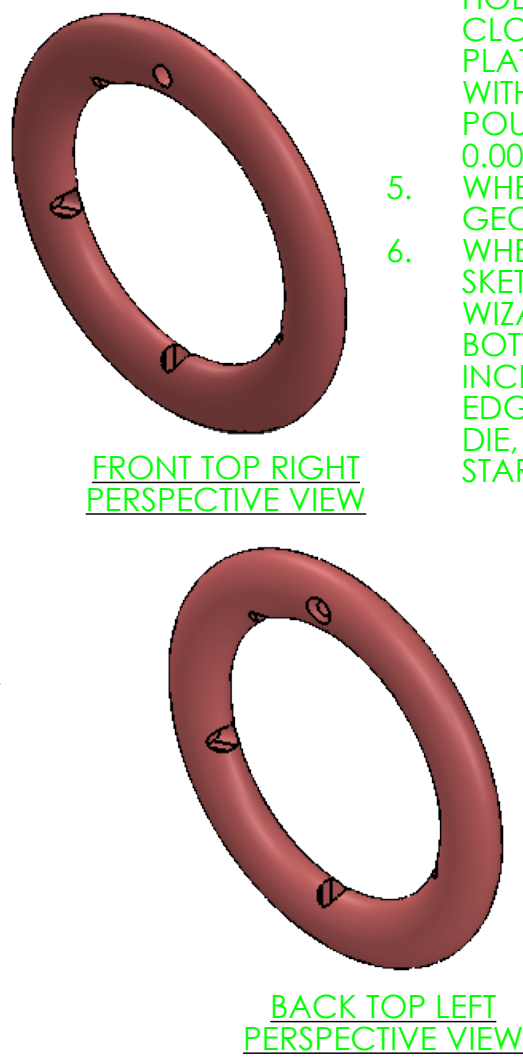
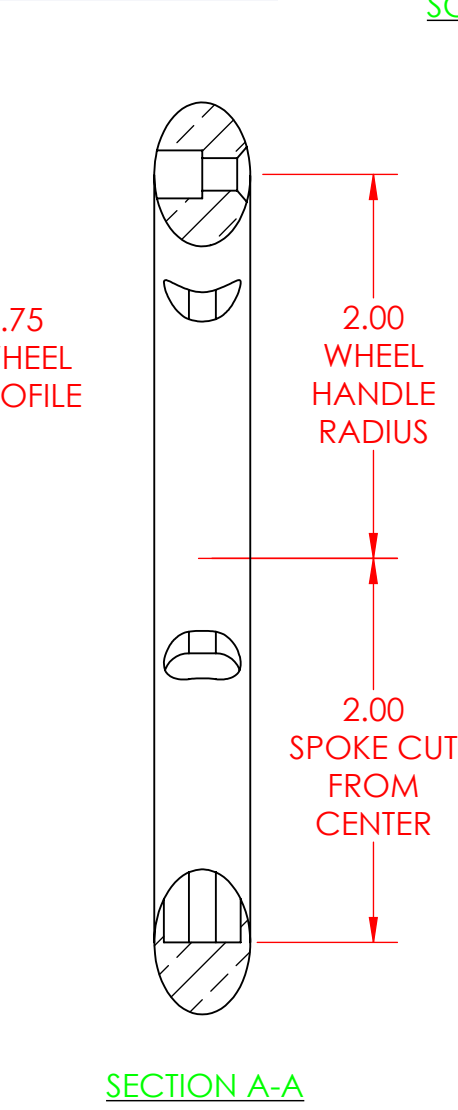
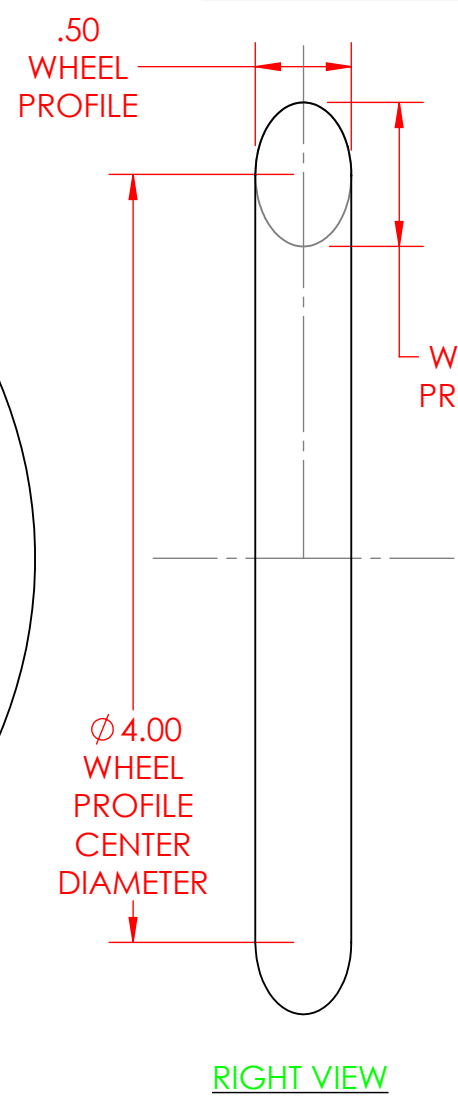
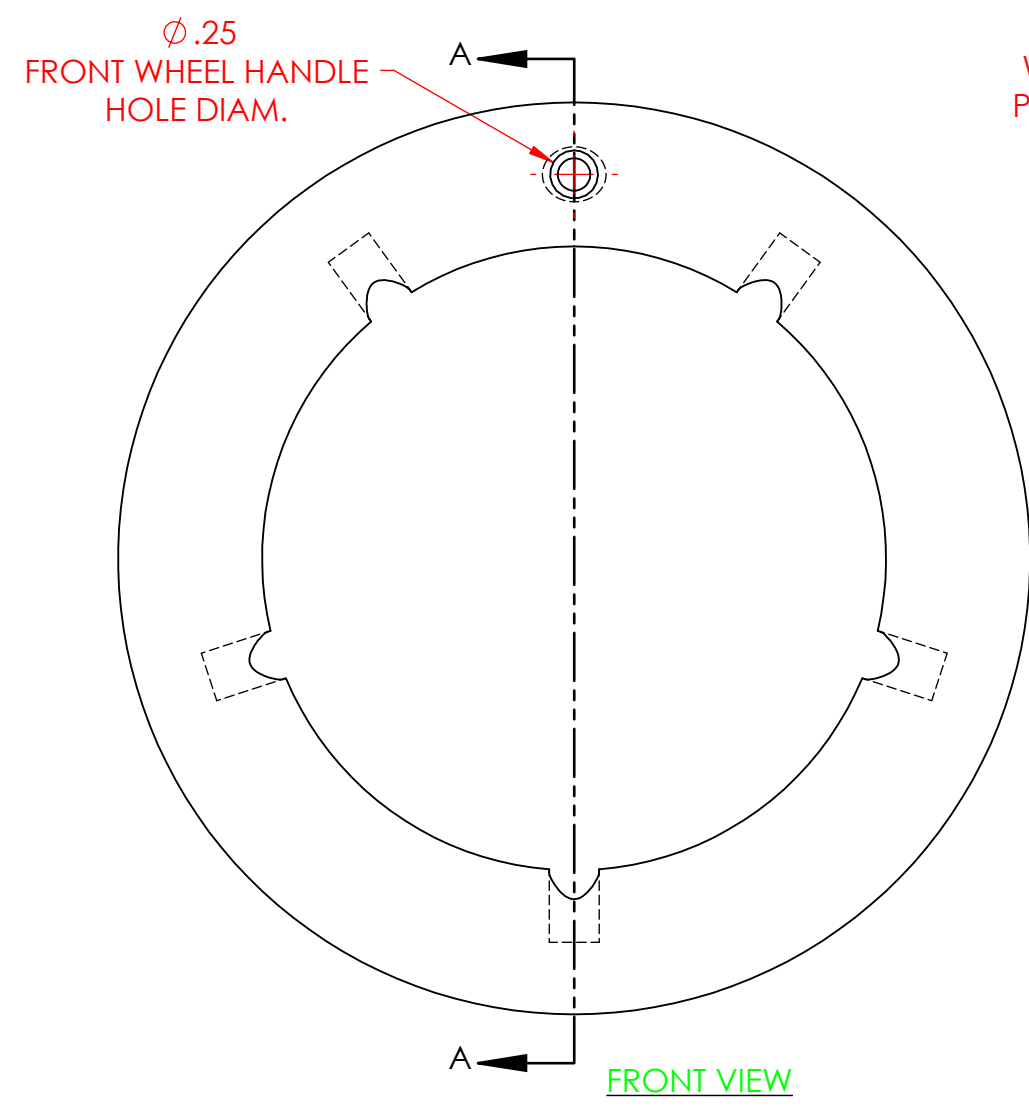
3

2

1



- SHEET NOTES:**
1. BASE FEATURE - MASS = 0.9895 POUNDS, CENTER OF MASS = 0
 2. WHEEL SPOKE HOLES - CUT DOWN AS SHOWN TO THE CENTER OF THE WHEEL FEATURE, MASS = 0.9487 POUNDS, CENTER OF MASS = 0
 3. FRONT WHEEL HANDLE HOLE AS SHOWN - MASS = 0.9454 POUNDS, CENTER OF MASS - X = 0.0000, Y = -0.0068, Z = -0.0004.
 4. WHEEL HANDLE BACK HOLE WIZARD HOLE - FLAT HEAD SCREW (100), #8 CLOSE FIT, THROUGH ALL, 3D SKETCH PLATEMENT, CONCENTRIC RELATION WITH EXISTING HOLE, MASS = 0.9435 POUNDS, CENTER OF MASS - X = 0.0000, Y = -0.0109, Z = -0.0001.
 5. WHEEL SPOKE PART - EXISTING SKETCH GEOMETRY AT 1.65 INCHES LONG.
 6. WHEEL HANDLE PART - EXISTING SKETCH GEOMETRY, BACK HOLE WIZARD HOLE - STRAIGHT TAP HOLE, BOTTOMING TAPPED HOLE, #8-32, 1/2 INCH DEEP -- THREAD - CHOOSE FRONT EDGE, BLIND AT 1/4 INCH, TYPE = INCH DIE, SIZE 1/4-28, OFFSET FOR THREAD START, THREAD METHOD - CUT THREAD.



PROPRIETARY AND CONFIDENTIAL

THE INFORMATION CONTAINED IN THIS DRAWING AND ANY RELATED MATERIAL IS THE SOLE PROPERTY OF ENTERPRISE DESIGN AND INNOVATIONS. ANY SHARING OF THIS INFORMATION, IN WHOLE OR ANY PART THEREOF IS PROHIBITED WITHOUT EXPRESS WRITTEN CONSENT OF ENTERPRISE DESIGN AND INNOVATIONS.

SARRUS WHEEL - WHEEL PART				REVISIONS DATE:	ITEM:	NAME	DATE	UNITS IN INCHES TOLERANCES ARE 0.010 INCHES UNLESS OTHERWISE NOTED	
WHEEL PARTS						DRAWN	CSS		2/24/18
SARRUS MECHANISM						CHECKED	MEE		2/25/18
SHEET	SHEET SCALE	SHEET SIZE	REV			APPV.	000		000
1	1:1	B				MATERIAL	Aluminum Bronze		
						VERSION DATE	2/27/2018		
				SHEET FILE NAME: 180223-2016-Sarrus-Wheel-Wheel-Part					



4

3

2

1