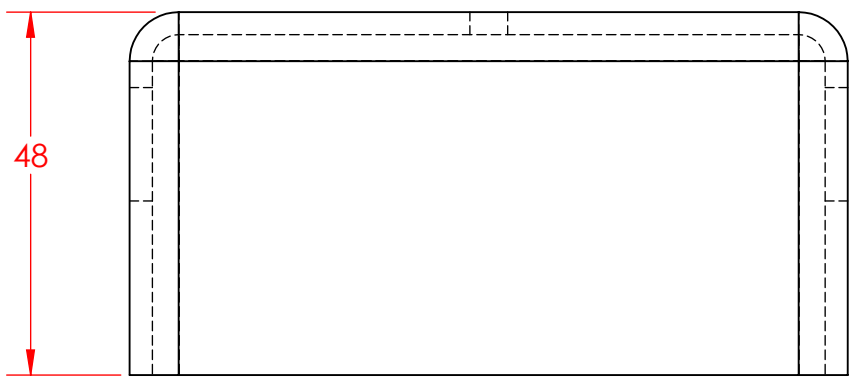


4

3

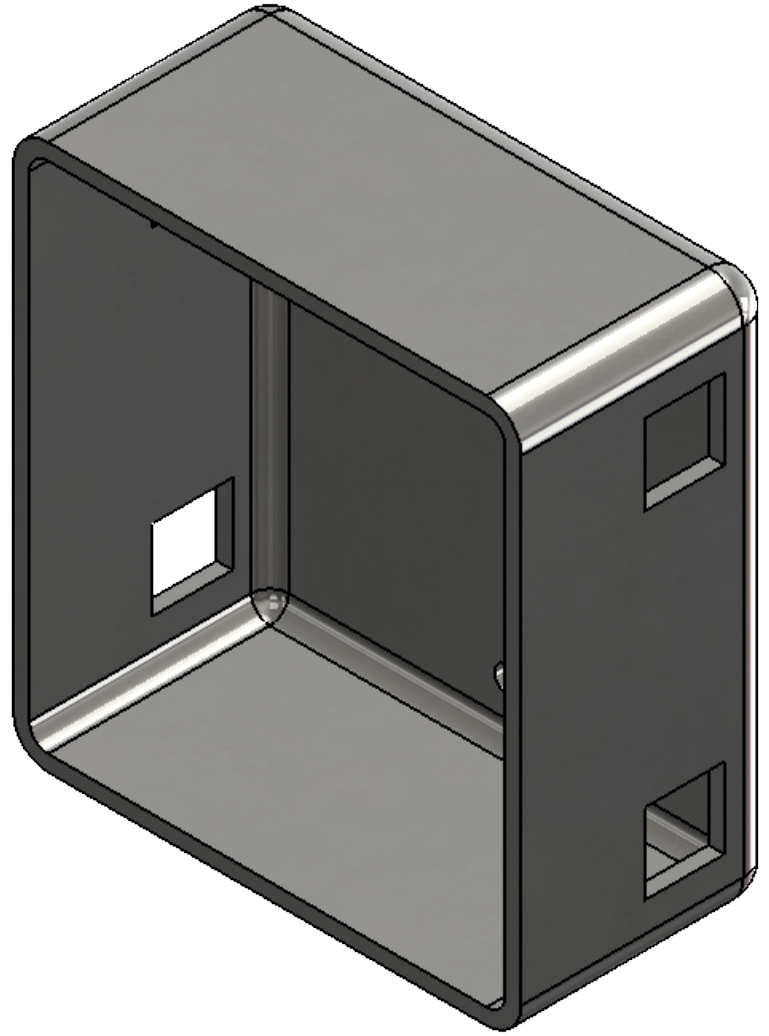
2

1



TOP VIEW

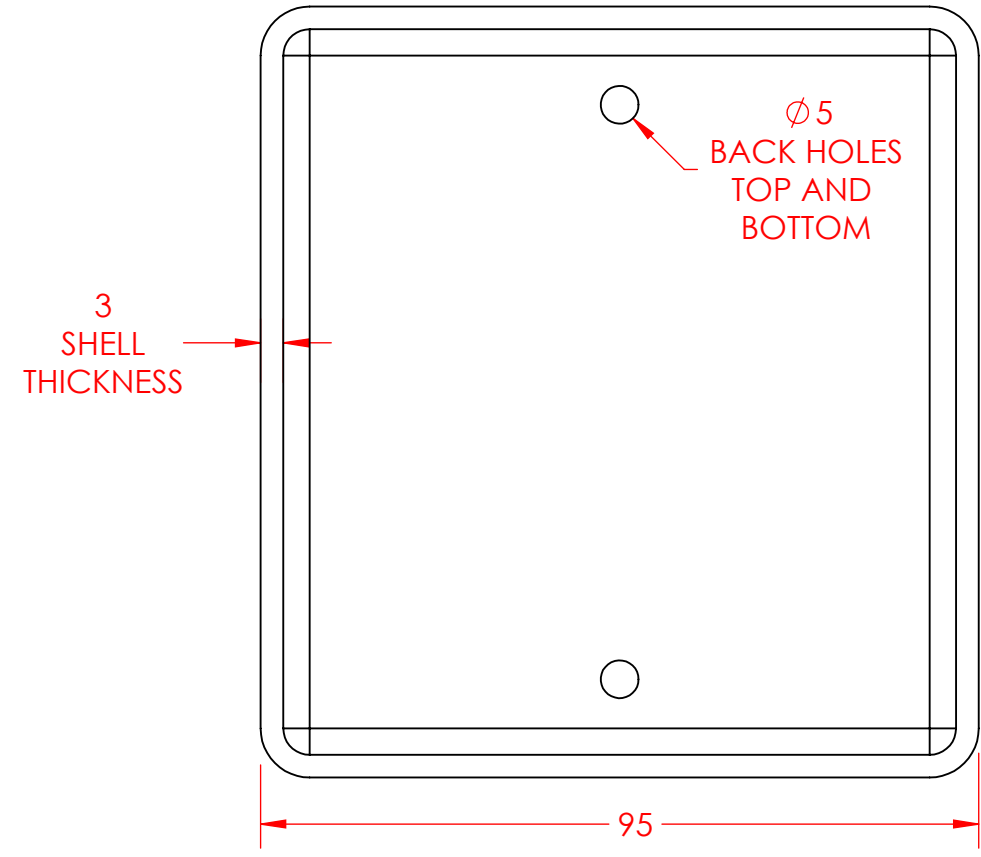
- SHEET NOTES: SUGGESTED FEATURE ORDER AND MASS PROPERTIES**
1. BASE FEATURE EXTRUDE MID PLANE
    1. MASS = 3627.936 GRAMS
    2. CENTER OF MASS: X = 0, Y = 0, Z = 0
  2. SIDE FILLET
    1. MASS = 3587.927 GRAMS
    2. CENTER OF MASS: X = 0.000, Y = 0.000, Z = 0.166
  3. FRONT SHELL
    1. MASS = 600.037 GRAMS
    2. CENTER OF MASS: X = 0.000, Y = 0.000, Z = -6.743
  4. BACK HOLES
    1. MASS = 599.118 GRAMS
    2. CENTER OF MASS: X = 0.000, Y = 0.000, Z = -6.719
  5. SIDE HOLES
    1. MASS = 578.058 GRAMS
    2. CENTER OF MASS: X = 0.000, Y = 0.000, Z = -6.727



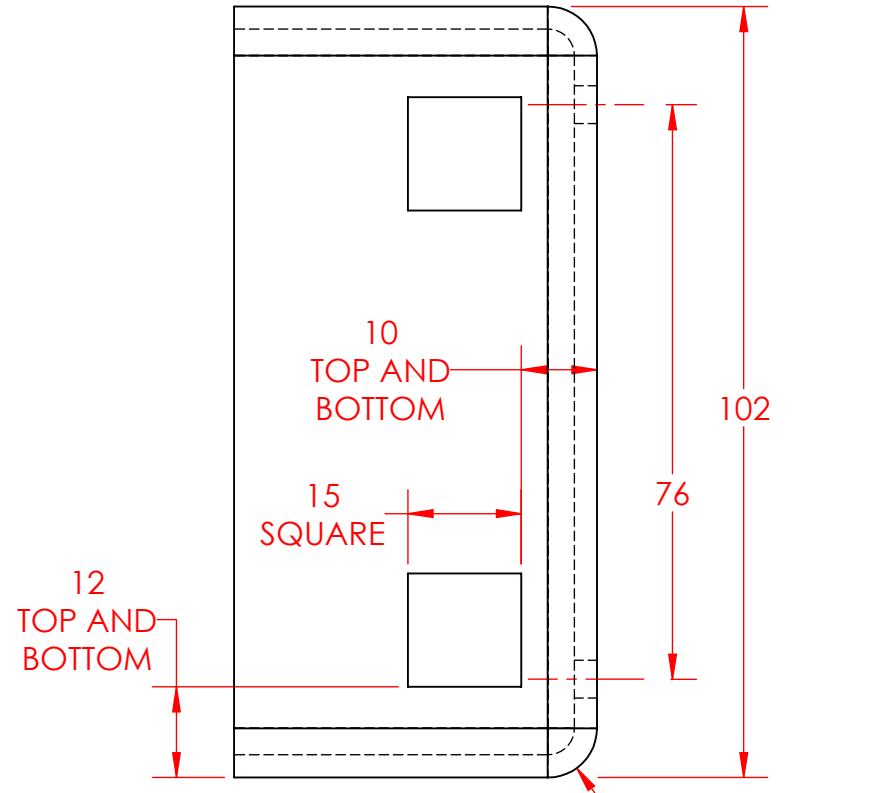
FRONT TOP RIGHT ISOMETRIC VIEW

B

B



FRONT VIEW



RIGHT VIEW

R6.50 FEATURE FILLET BACK EDGES

A

A

**PROPRIETARY AND CONFIDENTIAL**

THE INFORMATION CONTAINED IN THIS DRAWING AND ANY RELATED MATERIAL IS THE SOLE PROPERTY OF ENTERPRISE DESIGN AND INNOVATIONS. ANY SHARING OF THIS INFORMATION, IN WHOLE OR ANY PART THEREOF IS PROHIBITED WITHOUT EXPRESS WRITTEN CONSENT OF ENTERPRISE DESIGN AND INNOVATIONS.

THE JUNCTION BOX ENCLOSURES ELECTRICAL ITEMS				REVISIONS DATE:	ITEM:	NAME	DATE	UNITS IN MM TOLERANCES ARE 0.20 MM UNLESS OTHERWISE NOTED
						DRAWN	CSS	
SHEET 1				SHEET SCALE 1:2		SHEET SIZE B		REV
						VERSION DATE	3/30/2018	
						SHEET FILE NAME: 01-Junction-Box-3		



4

3

2

1