

4

3

2

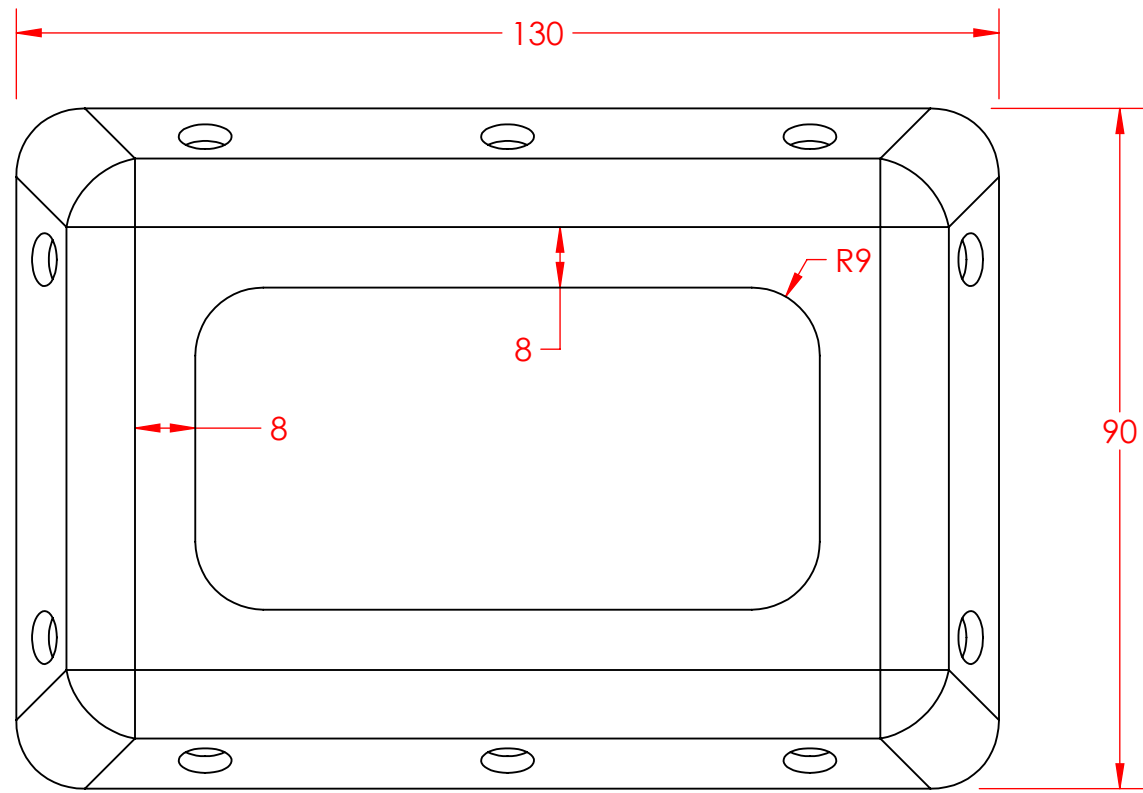
1

B

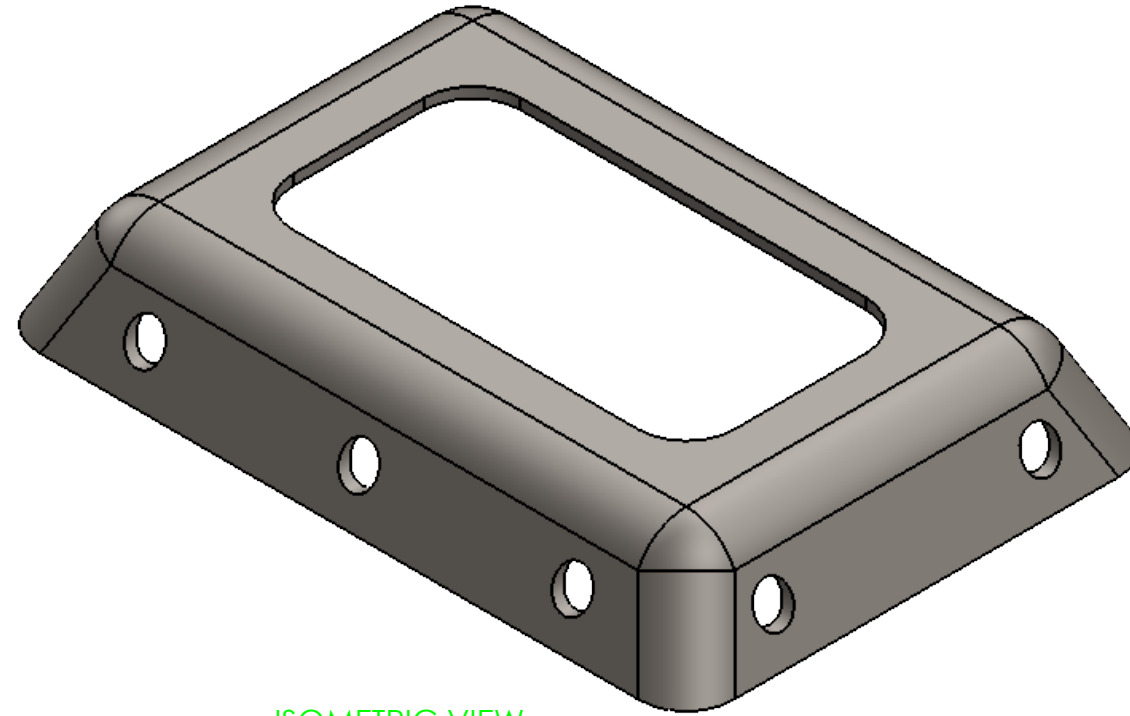
B

A

A



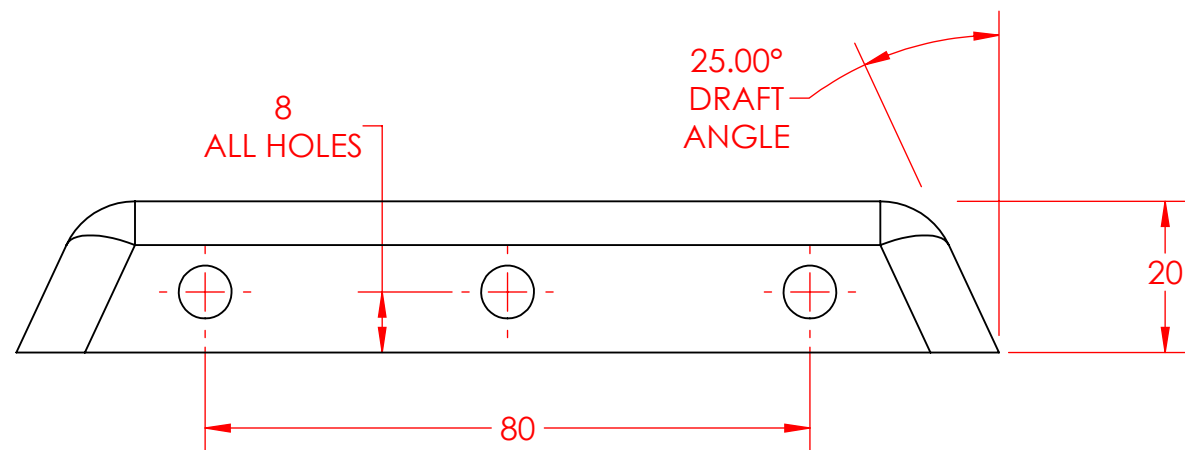
TOP VIEW



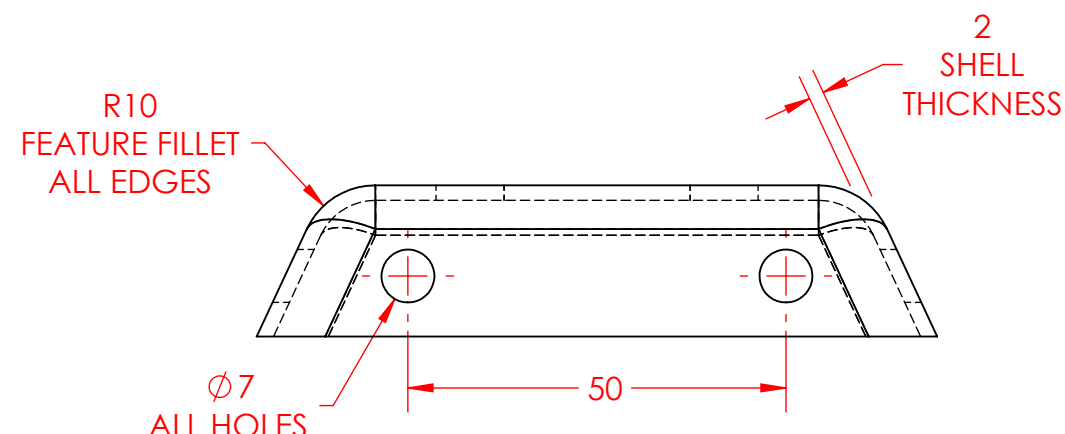
ISOMETRIC VIEW

SHEET NOTES: SUGGESTED FEATURE ORDER AND MASS PROPERTIES

1. BASE FEATURE EXTRUDE FROM TOP UP
 1. MASS = 1536.888 GRAMS
 2. CENTER OF MASS: X = 0.000, Y = 9.359, Z = 0.000
2. TOP SIDE FILLET
 1. MASS = 1507.872 GRAMS
 2. CENTER OF MASS: X = 0.000, Y = 9.239, Z = 0.0000
3. BOTTOM SHELL
 1. MASS = 240.762 GRAMS
 2. CENTER OF MASS: X = 0.000, Y = 13.765, Z = 0.000
4. TOP WINDOW CUT
 1. MASS = 186.459 GRAMS
 2. CENTER OF MASS: X = 0.000, Y = 12.241, Z = 0.000
5. RIGHT MOUNTING HOLES FROM RIGHT PLANE
 1. MASS = 183.785 GRAMS
 2. CENTER OF MASS: X = 0.000, Y = 12.303, Z = 0.000
6. FRONT MOUNTING HOLES FROM FRONT PLANE
 1. MASS = 179.775 GRAMS
 2. CENTER OF MASS: X = 0.000, Y = 12.398, Z = 0.000



FRONT VIEW



RIGHT VIEW

PROPRIETARY AND CONFIDENTIAL

THE INFORMATION CONTAINED IN THIS DRAWING AND ANY RELATED MATERIAL IS THE SOLE PROPERTY OF ENTERPRISE DESIGN AND INNOVATIONS. ANY SHARING OF THIS INFORMATION, IN WHOLE OR ANY PART THEREOF IS PROHIBITED WITHOUT EXPRESS WRITTEN CONSENT OF ENTERPRISE DESIGN AND INNOVATIONS.

SENSOR COVER AND WINDOW BOX COVERS SENSOR ITEMS				REVISIONS DATE:	ITEM:	NAME	DATE	UNITS IN MM TOLERANCES ARE 0.20 MM UNLESS OTHERWISE NOTED
						DRAWN	CSS	
SHEET 1						VERSION DATE 3/30/2018		MATERIAL AISI 1015 Steel, Cold Drawn (SS)
SHEET SIZE B						SHEET FILE NAME: 01-Sensor-Cover-Window		ED&I ENTERPRISE DESIGN AND INNOVATIONS

4

3

2

1