

4

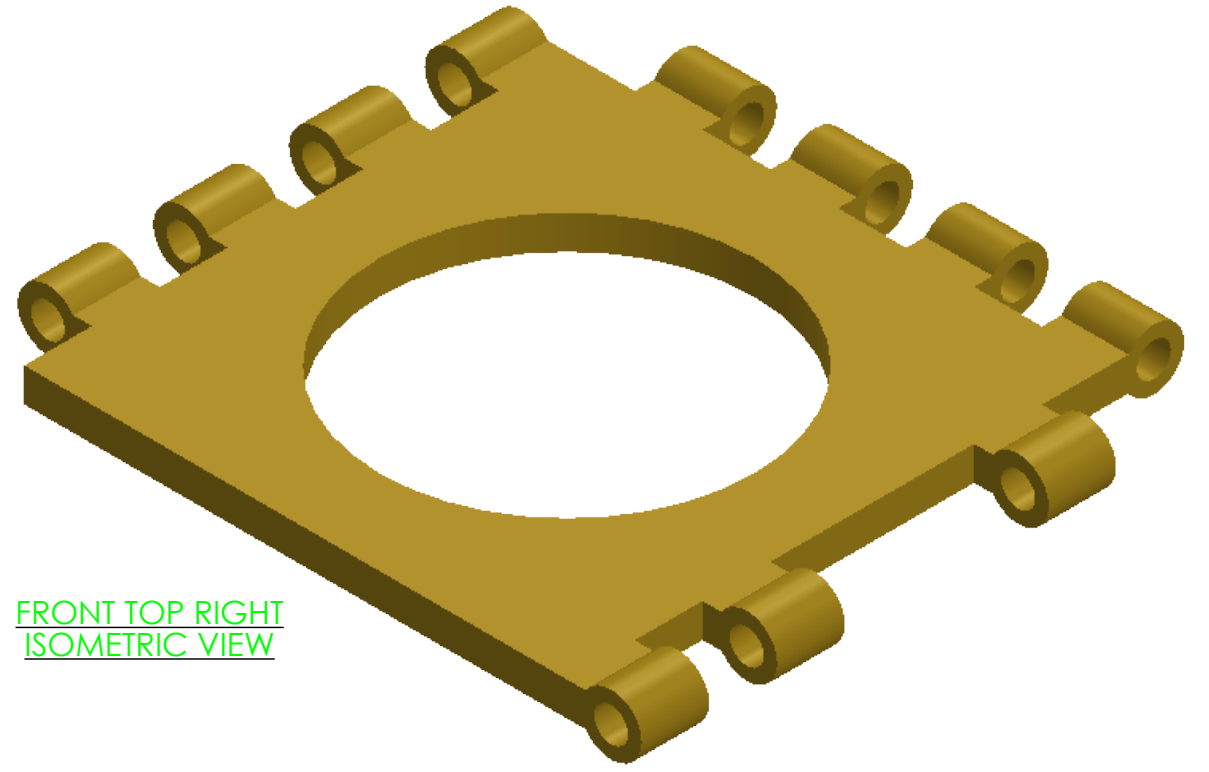
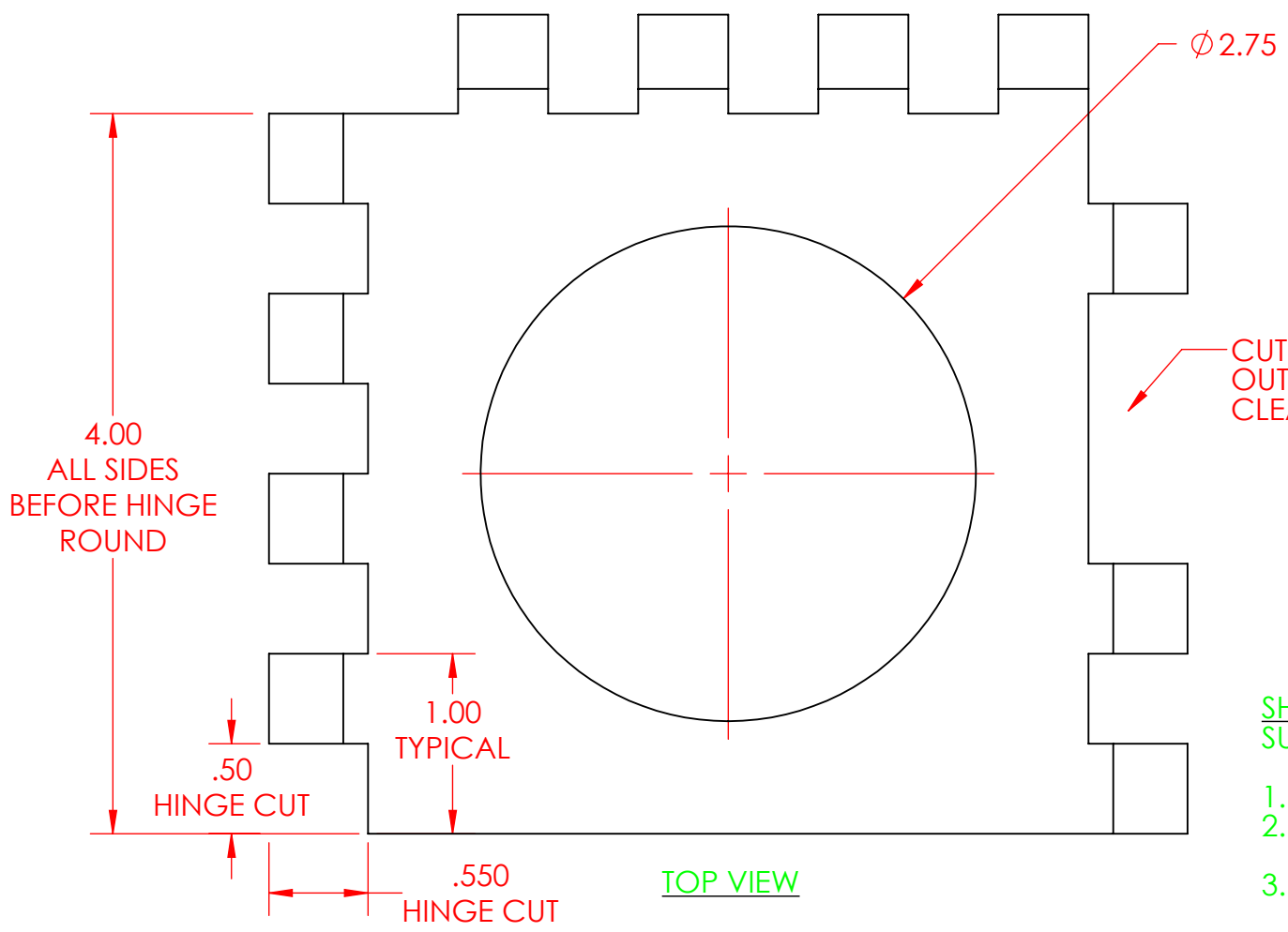
3

2

1

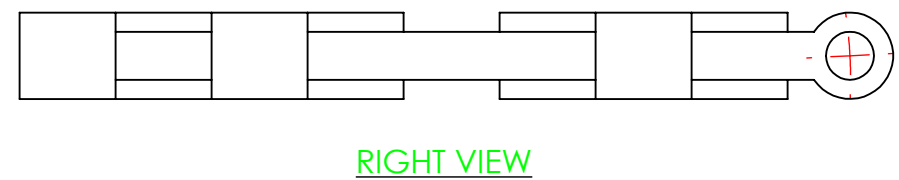
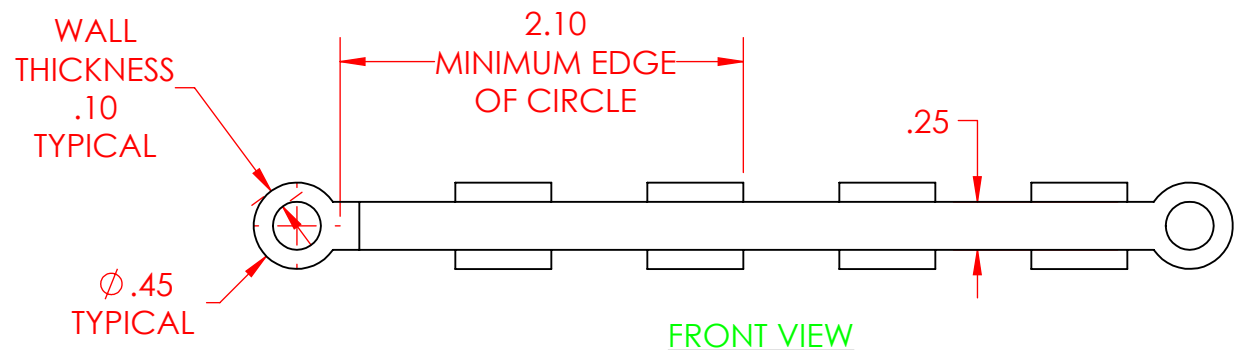
B

B



SHEET NOTES
SUGGESTED FEATURE ORDER FOR DESIGN

1. BASE AND CENTER HOLE CUT FEATURES, MASS = 0.7723 POUNDS, CENTER OF MASS IN THE CENTER
2. HINGE ROUND AND HINGE ROUND HOLE FEATURES, MASS = 0.9419 POUNDS, CENTER OF MASS: X = -0.4086, Y = 0, Z = 0
3. HINGE ROUND - HINGE CUT AND LINEAR PATTERN, MASS = 0.8571 POUNDS, CENTER OF MASS: X = -0.2245, Y = 0, Z = -0.0247
4. HINGE ROUND CUT CIRCULAR FEATURE PATTERN TO THE BACK AND RIGHT, MASS = 1.0266 POUNDS, CENTER OF MASS: X = 0.0206, Y = 0, Z = -0.1874
5. PUSH ROD CLEARANCE CUT - FINAL MASS VALUES, MASS = 1.0054 POUNDS, CENTER OF MASS: X = -0.0268, Y = 0, Z = -0.1861



PROPRIETARY AND CONFIDENTIAL

THE INFORMATION CONTAINED IN THIS DRAWING AND ANY RELATED MATERIAL IS THE SOLE PROPERTY OF ENTERPRISE DESIGN AND INNOVATIONS. ANY SHARING OF THIS INFORMATION, IN WHOLE OR ANY PART THEREOF IS PROHIBITED WITHOUT EXPRESS WRITTEN CONSENT OF ENTERPRISE DESIGN AND INNOVATIONS.

A

A

HINGE PLATE (PARTIAL)				REVISIONS DATE:	ITEM:	NAME	DATE	UNITS IN INCHES TOLERANCES ARE 0.010 INCHES UNLESS OTHERWISE NOTED	
SARRUS MECHANISM						DRAWN	CSS		10/5/17
VAROIOUS VIEWS						CHECKED	000		000
						APPV.	000		000
						MATERIAL	Brass		
SHEET 1	SHEET SCALE 1:1	SHEET SIZE B	REV			VERSION DATE	4/11/2018		
				SHEET FILE NAME: 03-Sarrus-Hinge-Plate-Feature-Pattern					



4

3

2

1