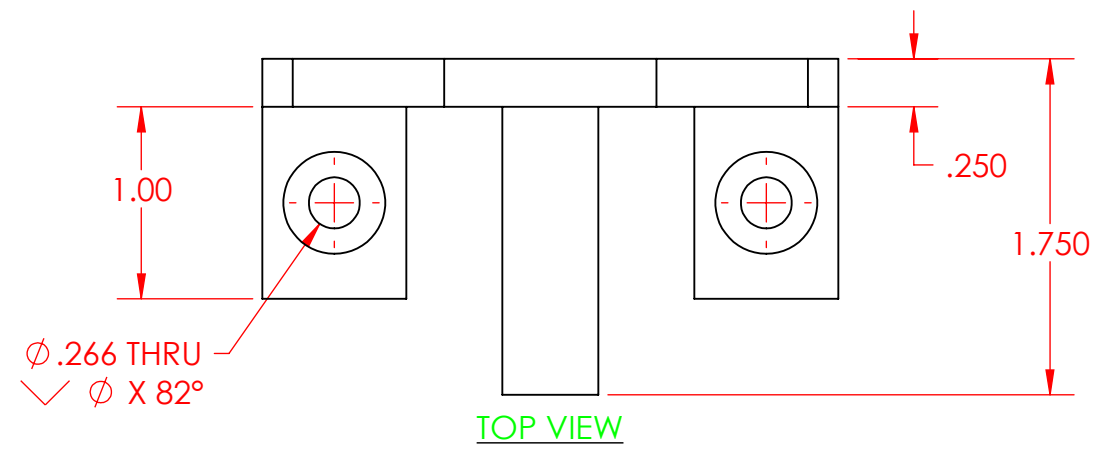


4

3

2

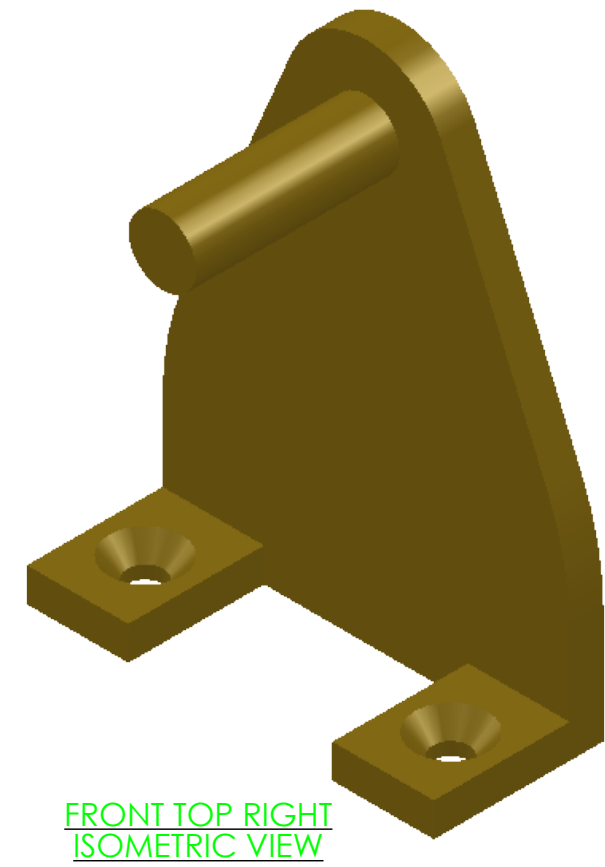
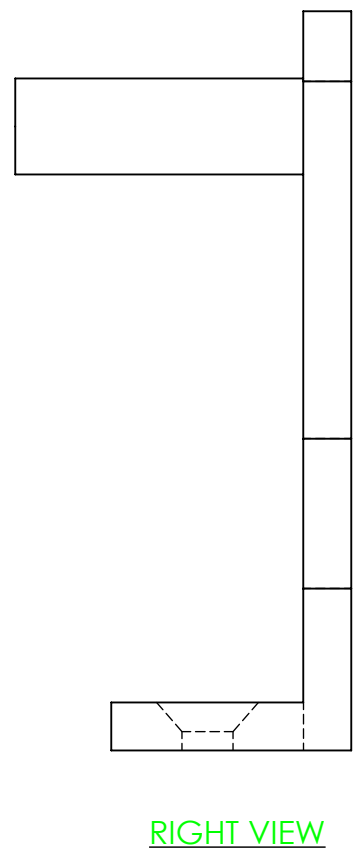
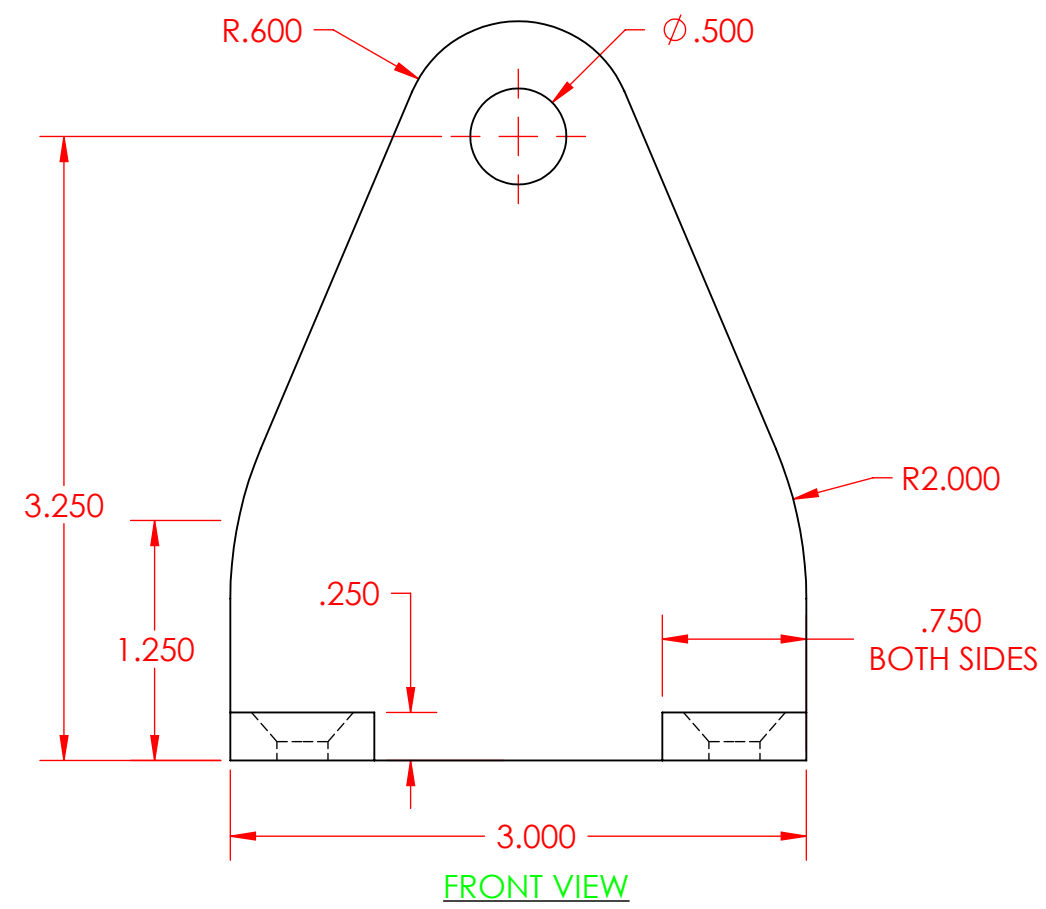
1



SHEET NOTES

SUGGESTED FEATURE ORDER FOR DESIGN:

1. BACK BASE FEATURE - ORIGIN CENTERED ON BOTTOM EDGE - APPLY THE 2 INCH SKETCH FILLET LAST - EXTRUDE TOWARD THE FRONT - MASS = 0.6606 POUNDS, CENTER OF MASS: X = 0, Y = 1.5622, Z = 0.1250
2. BOTTOM FRONT TABS - MASS = 0.7758 POUNDS, CENTER OF MASS: X = 0, Y = 1.3488, Z = 0.2178
3. TAB HOLES - HOLE TYPE - ANSI INCH, 1/4 INCH COUNTER SUNK HEAD CAP SCREW WITH NORMAL FIT
MASS = 0.7604 POUNDS, CENTER OF MASS - X = 0, Y = 1.3730, Z = 0.2070
4. AXLE PIN - FINAL MASS = 0.8508 POUNDS, CENTER OF MASS: X = 0, Y = 1.5725, Z = 0.2913



PROPRIETARY AND CONFIDENTIAL

THE INFORMATION CONTAINED IN THIS DRAWING AND ANY RELATED MATERIAL IS THE SOLE PROPERTY OF ENTERPRISE DESIGN AND INNOVATIONS. ANY SHARING OF THIS INFORMATION, IN WHOLE OR ANY PART THEREOF IS PROHIBITED WITHOUT EXPRESS WRITTEN CONSENT OF ENTERPRISE DESIGN AND INNOVATIONS.

SARRUS MECHANISM WHEEL MOUNT				REVISIONS DATE:	ITEM:	NAME	DATE	UNITS IN INCHES TOLERANCES ARE 0.010 INCHES UNLESS OTHERWISE NOTED	
SARRUS MECHANISM						DRAWN	CSS		4/8/18
VARIOUS VIEWS						CHECKED	4/9/18		4/9/18
						APPV.	000		000
						MATERIAL	Brass		
SHEET 1	SHEET SCALE 1:1	SHEET SIZE B	REV			VERSION DATE	4/13/2018		
				SHEET FILE NAME: 03-Sarrus-Wheel-Mount					



4

3

2

1

B

B

A

A